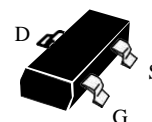


N-Channel High Density Trench MOSFET

Features:

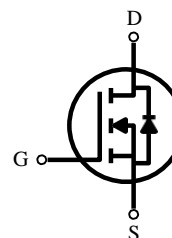
- Super high dense cell trench design for low $R_{DS(on)}$.
- Rugged and reliable.
- Surface Mount package.

SOT-23



PRODUCT SUMMARY

V_{DSS}	I_D	$R_{DS(on)}$ (m Ω) Max
30V	5.2A	48 @ $V_{GS} = 10V$
	3.6A	53 @ $V_{GS} = 4.5V$
	2.4A	77 @ $V_{GS} = 2.5V$



ABSOLUTE MAXIMUM RATINGS ($T_A = 25^\circ C$ unless otherwise noted)

Parameter	Symbol	Limit	Unit
Drain-Source Voltage	V_{DS}	30	V
Gate-Source Voltage	V_{GS}	± 12	V
Drain Current-Continuous ^a @ $T_A = 25^\circ C$ -Pulse ^b	I_D	5.2	A
	I_{DM}	22	A
Drain-Source Diode Forward Current ^a	I_S	2.5	A
Maximum Power Dissipation ^a	P_D	$T_A = 25^\circ C$	1.25
		$T_A = 75^\circ C$	0.75
Operating Junction and Storage Temperature Range	T_J, T_{STG}	- 55 to 150	$^\circ C$

THERMAL CHARACTERISTICS

Thermal Resistance, Junction-to-Ambient ^a	R_{thJA}	100	$^\circ C/W$
--	------------	-----	--------------

Note :

a. Surface Mounted on FR4 Board , $t \leq 10$ sec.

b. Pulse width limited by maximum junction temperature.

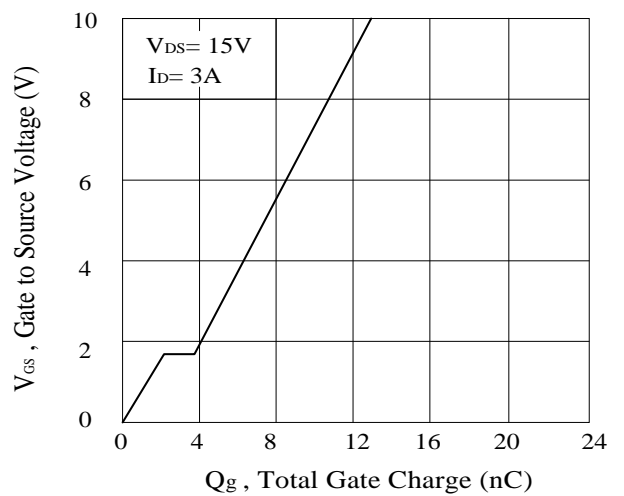
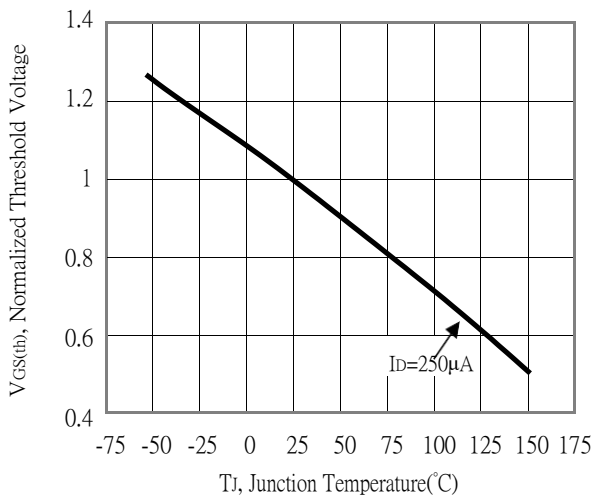
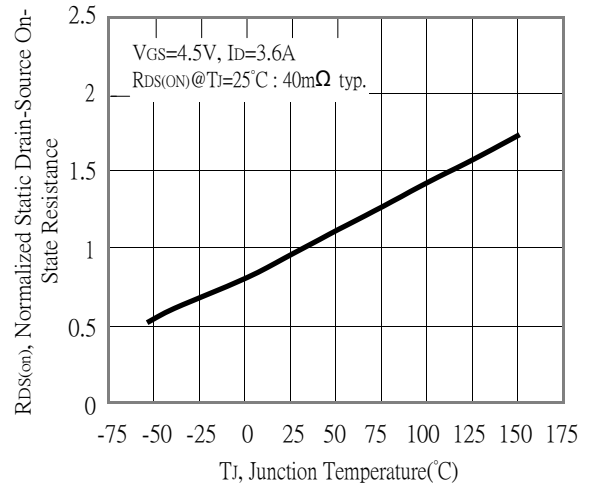
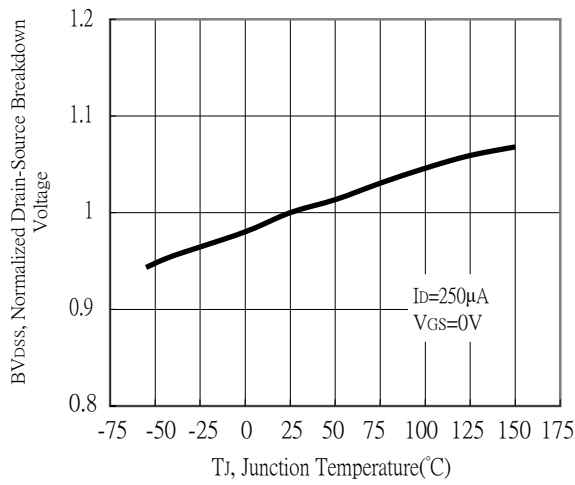
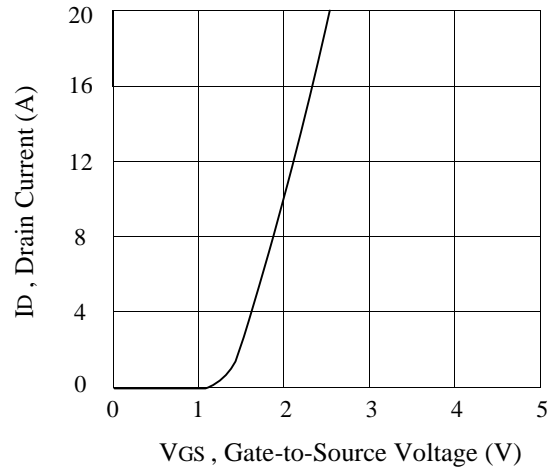
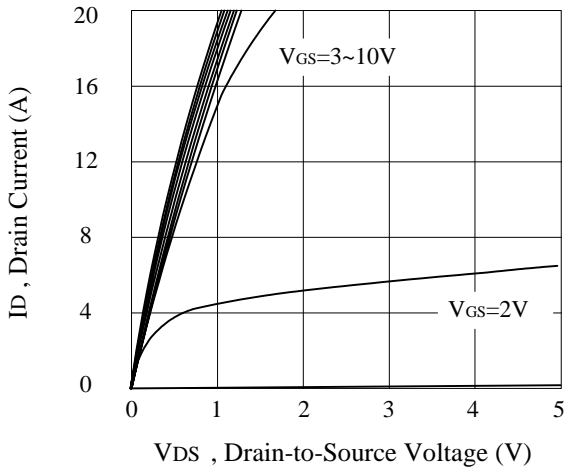
CHARACTERISTICS (T_A = 25 °C unless otherwise noted)

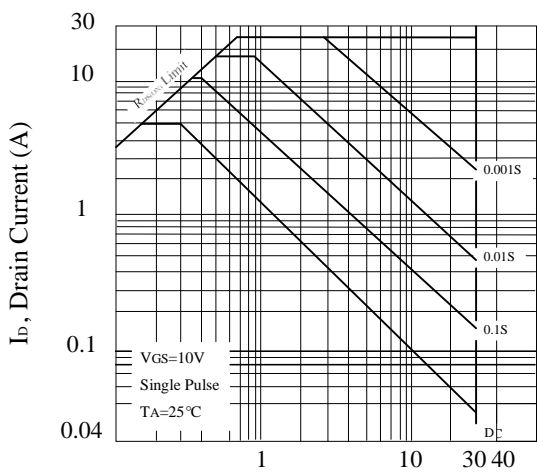
Parameter	Symbol	Condition	Min	Typ ^c	Max	Unit
OFF CHARACTERISTICS						
Drain-Source Breakdown Voltage	BV _{DSS}	V _{GS} = 0V , I _D = 250uA	30			V
Zero Gate Voltage Drain Current	I _{DSS}	V _{DS} = 24V , V _{GS} = 0V			1	uA
Gate-Body Leakage	I _{GSS}	V _{GS} = ±12V , V _{DS} = 0V			±100	nA
ON CHARACTERISTICS^b						
Gate Threshold Voltage	V _{GS(th)}	V _{DS} = V _{GS} , I _D = 250uA	0.7	0.9	1.4	V
Drain-Source On-State Resistance	R _{DS(on)}	V _{GS} = 10V , I _D = 5.2A		35	48	Ω
		V _{GS} = 4.5V , I _D = 3.6A		40	53	
		V _{GS} = 2.5V , I _D = 2.4A		60	77	
Forward Transconductance	g _{fs}	V _{DS} = 5V , I _D = 5A		10		S
DRAIN-SOURCE DIODE CHARACTERISTICS^b						
Diode Forward Voltage	V _{SD}	V _{GS} = 0V , I _S = 1.0A			1.2	V
DYNAMIC CHARACTERISTICS^c						
Input Capacitance	C _{ISS}	V _{DS} = 15V , V _{GS} = 0V f = 1.0MHz		551		pF
Output Capacitance	C _{OSS}			54		pF
Reverse Transfer Capacitance	C _{RSS}			46		pF
SWITCHING CHARACTERISTICS^c						
Turn-On Delay Time	t _{D(ON)}	V _{DD} = 15V , I _D = 1A		6.5		ns
Rise Time	t _r		V _{GEN} = 10V		2	
Turn-Off Delay Time	t _{D(OFF)}	R _L = 15 Ω R _{GEN} = 6 Ω		28.6		ns
Fall Time	t _f				2.6	
Total Gate Charge	Q _g	V _{DS} = 15V I _D = 3A V _{GS} = 10V		13.2		nC
Gate-Source Charge	Q _{gs}			2.2		nC
Gate-Drain Charge	Q _{gd}			1.7		nC

Note :

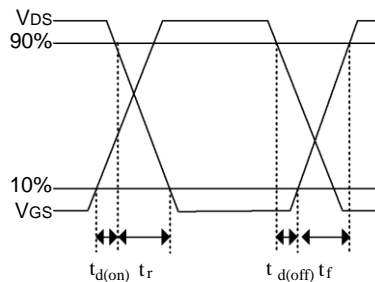
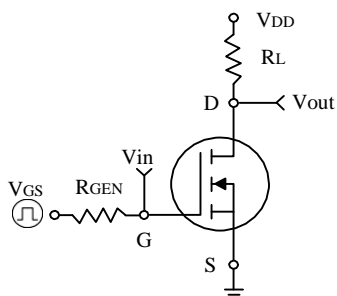
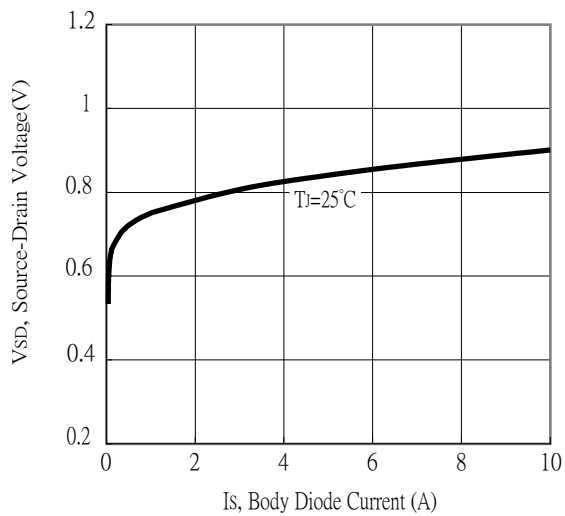
b. Pulse Test : Pulse width ≤ 300us , Duty Cycle ≤ 2%.

c. Guaranteed by design , not subject to production testing.

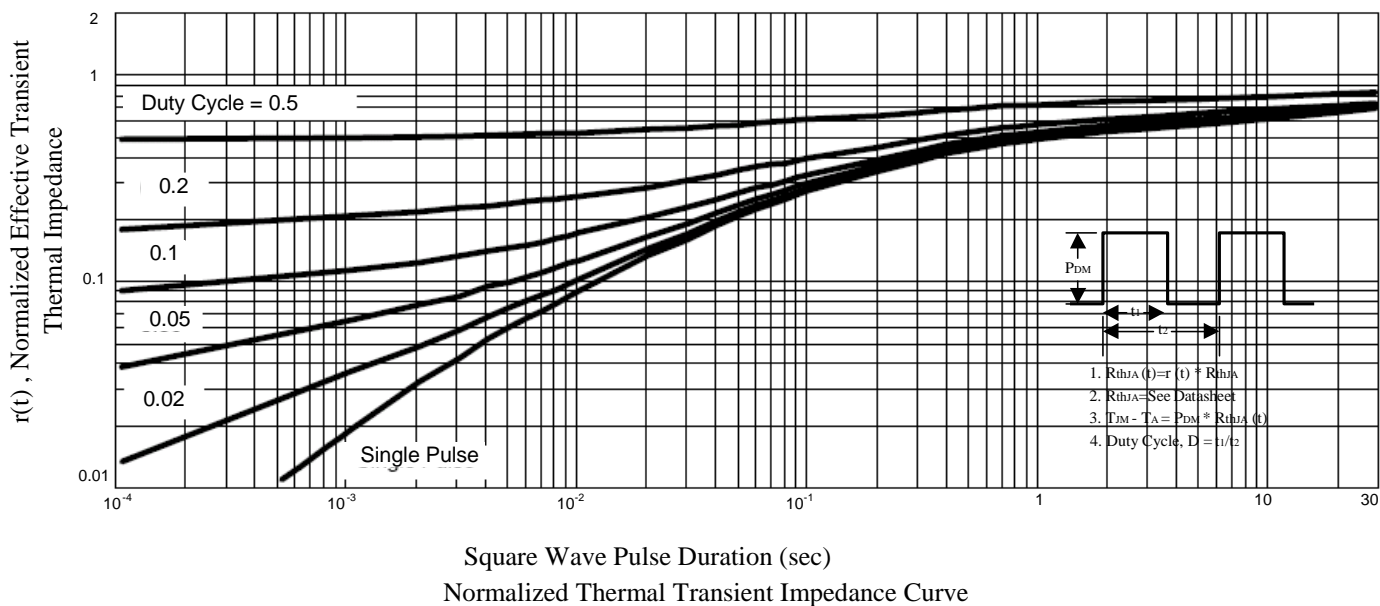




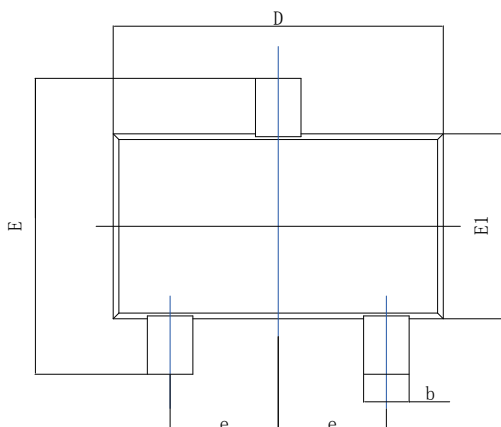
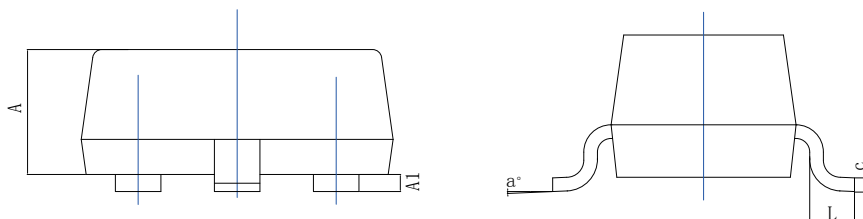
V_{DS} , Drain-Source Voltage (V)
Maximum Safe Operating Area



Switching Test Circuit and Switching Waveforms

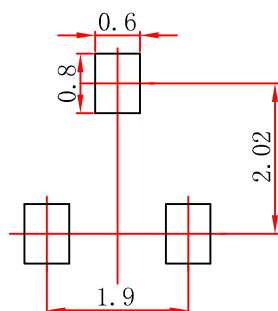


SOT-23 Dimension



SYMBOL	MILLIMETER		
	MIN	NOM	MAX
A	--	--	1.35
A1	0.04	0.07	0.15
b	0.30	0.40	0.50
c	0.08	--	0.21
D	2.72	2.92	3.12
E	2.10	2.33	2.64
E1	1.10	1.30	1.50
e	0.95BSC		
L	0.20	--	0.60
a°	0°	--	8°

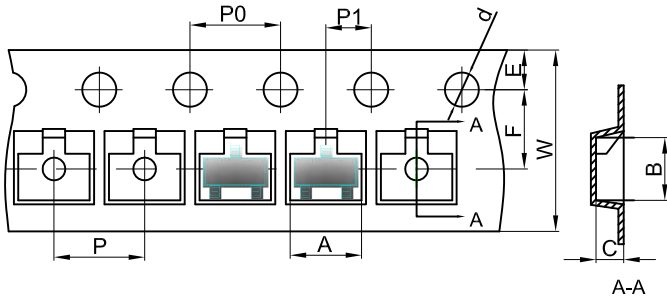
SOT-23 Suggested Pad Layout



- Note:**
1. Controlling dimension: in millimeters.
 2. General tolerance: $\pm 0.05\text{mm}$.
 3. The pad layout is for reference purposes only.

SOT-23 Tape and Reel

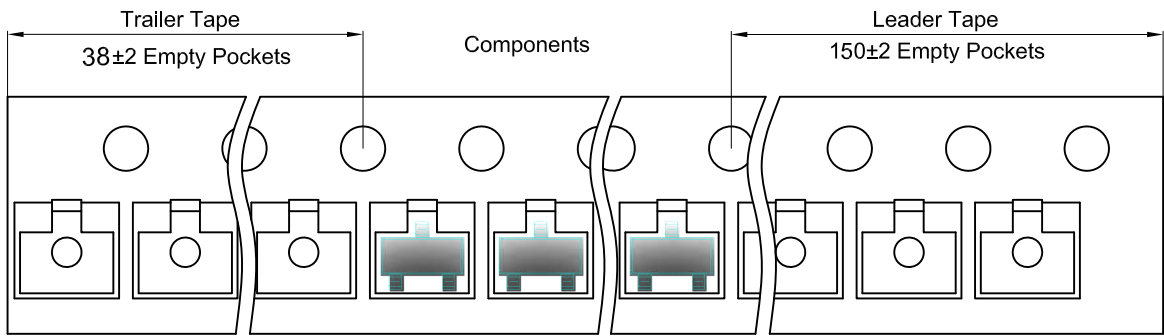
SOT-23 Embossed Carrier Tape



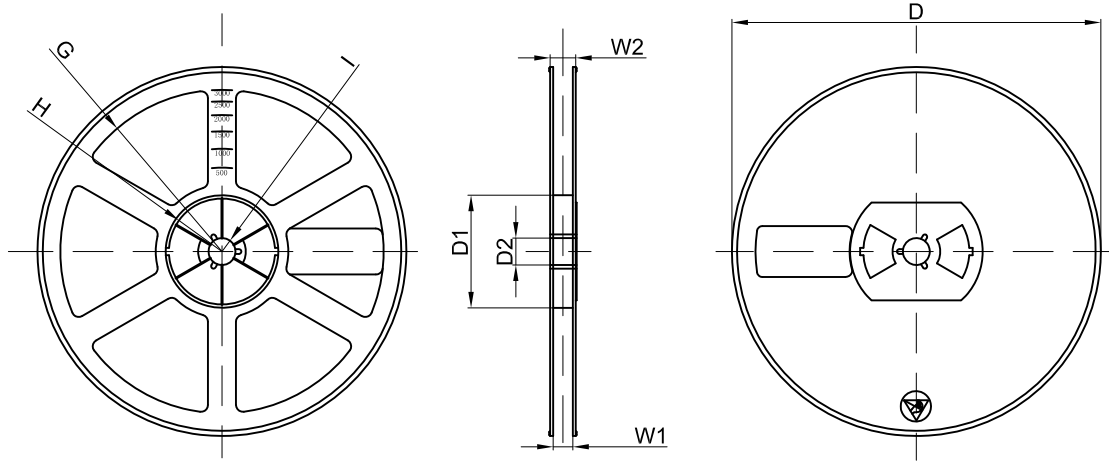
Packaging Description:
 SOT-23 parts are shipped in tape. The carrier tape is made from a dissipative (carbon filled) polycarbonate resin. The cover tape is a multilayer film (Heat Activated Adhesive in nature) primarily composed of polyester film, adhesive layer, sealant, and anti-static sprayed agent. These reeled parts in standard option are shipped with 3,000 units per 7" or 17.8cm diameter reel. The reels are clear in color and is made of polystyrene plastic (anti-static coated).

Dimensions are in millimeter										
Pkg type	A	B	C	d	E	F	P0	P	P1	W
SOT-23	3.15	2.77	1.22	Ø1.55	1.75	3.50	4.00	4.00	2.00	8.00

SOT-23 Tape Leader and Trailer



SOT-23 Reel



Dimensions are in millimeter								
Reel Option	D	D1	D2	G	H	I	W1	W2
7"Dia	Ø178.00	54.40	13.00	R78.00	R25.60	R6.50	9.50	12.30

REEL	Reel Size	Box	Box Size(mm)	Carton	Carton Size(mm)	G.W.(kg)
3000 pcs	7 inch	24,000 pcs	190×180×105	120,000 pcs	544×200×199	