

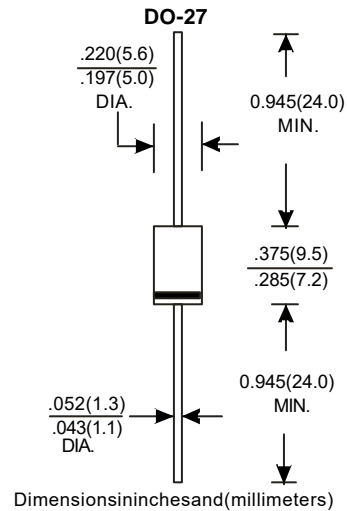
## 3.0 AMP GLASS PASSIVATED HIGH EFFICIENCY RECTIFIERS

### Features:

- \*Low forward voltage drop
- \*High current capability
- \*High reliability
- \*High surge current capability
- \*High speed switching
- \*Both normal and Pb free product are available:
- \*Normal: 80~95%Sn, 5~20%Pb
- \*Pb free: 99Sn above can meet Rohs environment substance directive request

### Mechanical Data:

- \*Case: Molded plastic
- \*Epoxy: UL94V-0 rate flame retardant
- \*Lead: Axial leads, solderable per MIL-STD-202, method 208 guaranteed
- \*Polarity: Color band denotes cathode end
- \*Mounting position: Any
- \*Weight: 1.10 grams



## MAXIMUM RATINGS AND ELECTRICAL CHARACTERISTICS

Rating 25°C ambient temperature unless otherwise specified.  
 Single phase half wave, 60Hz, resistive or inductive load.  
 For capacitive load, derate current by 20%.

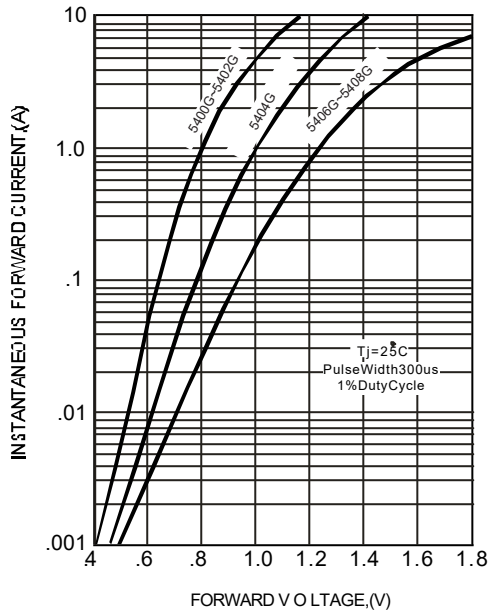
TYPENUMBER	UF5400G	UF5401G	UF5402G	UF5404G	UF5406G	UF5407G	UF5408G	UNITS
Maximum Recurrent Peak Reverse Voltage	50	100	200	400	600	800	1000	V
Maximum RMS Voltage	35	70	140	280	420	560	700	V
Maximum DC Blocking Voltage	50	100	200	400	600	800	1000	V
Maximum Average Forward Rectified Current .375"(9.5mm) Lead Length at Ta=75°C	3.0							A
Peak Forward Surge Current, 8.3 ms single half sine-wave superimposed on rated load (JEDEC method)	200							A
Maximum Instantaneous Forward Voltage at 3.0A	1.0		1.3	1.70			V	
Maximum DC Reverse Current Ta=25°C	5							μA
at Rated DC Blocking Voltage Ta=100°C	100							μA
Maximum Reverse Recovery Time(Note1)	50			75			nS	
Typical Junction Capacitance(Note2)	75							pF
Operating and Storage Temperature Range Tj, TSTG	-65—+150							°C

#### NOTES:

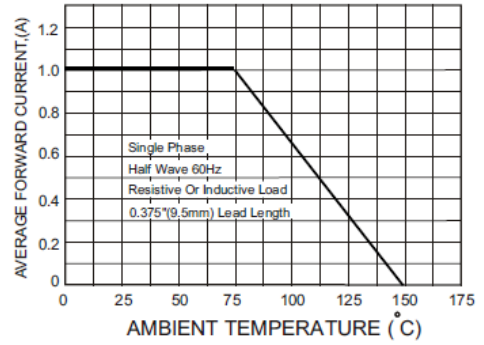
- 1.Reverse Recovery Time test condition: IF=0.5A, IR=1.0A, IRR=0.25A
- 2.Measured at 1MHz and applied reverse voltage of 4.0 VD.C.

**RATING AND CHARACTERISTIC CURVES(UF5400G THRU UF5408G)**

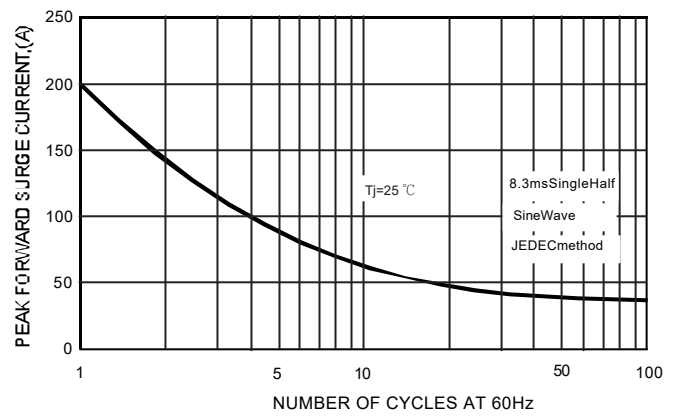
**FIG.1-TYPICAL FORWARD CHARACTERISTICS**



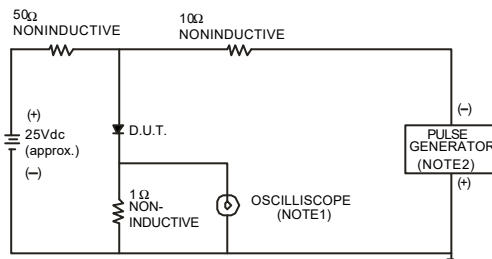
**FIG.2-TYPICAL FORWARD CURRENT DERATING CURVE**



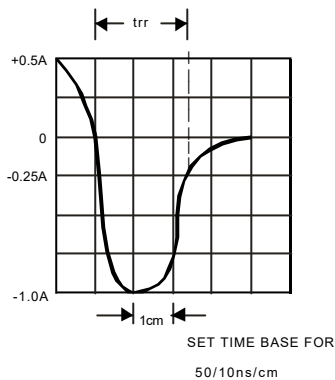
**FIG.4-MAXIMUM NON-REPETITIVE FORWARD SURGE CURRENT**



**FIG.3-TEST CIRCUIT DIAGRAM AND REVERSE RECOVERY TIME CHARACTERISTICS**



NOTES:1.RiseTime=7ns max.,Input Impedance=1megohm,22pF.  
 2.RiseTime=10ns max.,Source Impedance=50 ohms.



**FIG.5-TYPICAL JUNCTION CAPACITANCE**

