

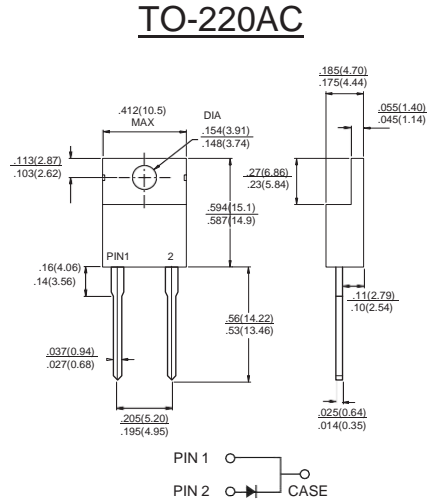
GLASS PASSIVATED SUPER FAST RECTIFIER

Features:

- High efficiency, Low VF
- High current capability
- High reliability
- High surge current capability
- For use in low voltage, high frequency inverter, free wheeling, and polarity protection application.

Mechanical Data:

- Cases: TO-220AC molded plastic
- Epoxy: UL 94V-0 rate flame retardant
- Terminals: Pure tin plated, lead free, solderable per MIL-STD-202, Method 208 guaranteed
- Polarity: As marked
- High temperature soldering guaranteed: 260°C/10 seconds/.25", (6.35mm) from case.
- Weight: 2.24 grams



Dimensions in inches and (millimeters)

Maximum Ratings and Electrical Characteristics

Rating at 25 °C ambient temperature unless otherwise specified.

Single phase, half wave, 60 Hz, resistive or inductive load.

For capacitive load, derate current by 20%

Type Number	Symbol	KMUR820	KMUR840	KMUR860	Units
Maximum Recurrent Peak Reverse Voltage	V_{RRM}	200	400	600	V
Maximum RMS Voltage	V_{RMS}	140	280	420	V
Maximum DC Blocking Voltage	V_{DC}	200	400	600	V
Maximum Average Forward Rectified Current .375"(9.5mm) Lead Length (See Fig. 1)	$I_{(AV)}$	8.0			A
Peak Forward Surge Current, 8.3 ms Single Half Sine-wave Superimposed on Rated Load (JEDEC method)	I_{FSM}	100			A
Maximum Instantaneous Forward Voltage @ 8.0A	V_F	0.975	1.30	1.7	V
Maximum DC Reverse Current @ $T_c=25\text{ }^\circ\text{C}$ at Rated DC Blocking Voltage @ $T_c=125\text{ }^\circ\text{C}$ (Note 4)	I_R	5.0 250			μA μA
Maximum Reverse Recovery Time (Note 2)	T_{rr}	25	50		nS
Maximum Forward Recovery Time TFR ($I_F=1.0\text{A}$, $di/dt = 50\text{A}/\mu\text{S}$),	T_{fr}	35	50		nS
Typical Thermal Resistance (Note 3)	$R_{\theta JC}$	3.0	2.0		$^\circ\text{C}/\text{W}$
Operating Temperature Range	T_J	-65 to +175			$^\circ\text{C}$
Storage Temperature Range	T_{STG}	-65 to +175			$^\circ\text{C}$

- Notes:
- Measured at 1 MHz and Applied Reverse Voltage of 4.0 Volts D.C.
 - Reverse Recovery Test Conditions: $I_F=0.5\text{A}$, $I_R=1.0\text{A}$, $I_{RR}=0.25\text{A}$
 - Thermal Resistance from Junction to Case, Mounted on Heatsink Size of 2" x 3" x 0.25" Al-Plate.
 - Pulse test: $t_p = 300\text{ }\mu\text{s}$, Duty Cycle < 2%.

RATINGS AND CHARACTERISTIC CURVES (KMUR820 THRU KMUR860)

FIG.1- MAXIMUM FORWARD CURRENT DERATING CURVE

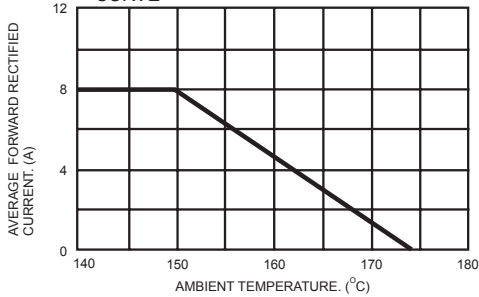


FIG.2- MAXIMUM NON-REPETITIVE FORWARD SURGE CURRENT

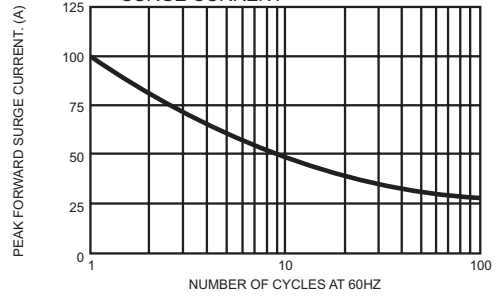


FIG.3- TYPICAL INSTANTANEOUS FORWARD CHARACTERISTICS

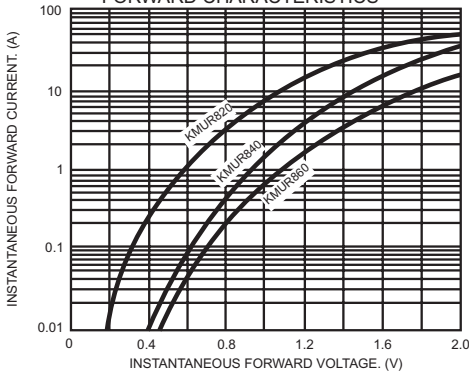


FIG.4- TYPICAL REVERSE CHARACTERISTICS

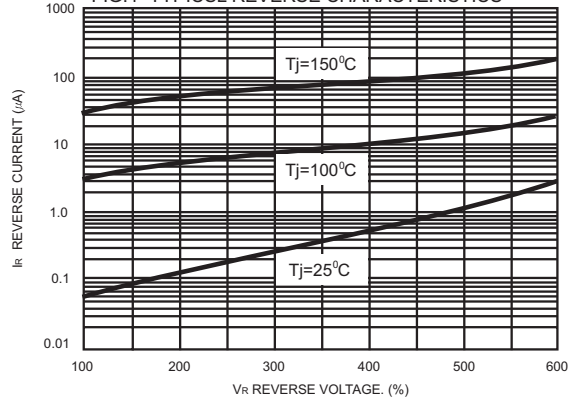


FIG.5- TYPICAL JUNCTION CAPACITANCE PERLEG

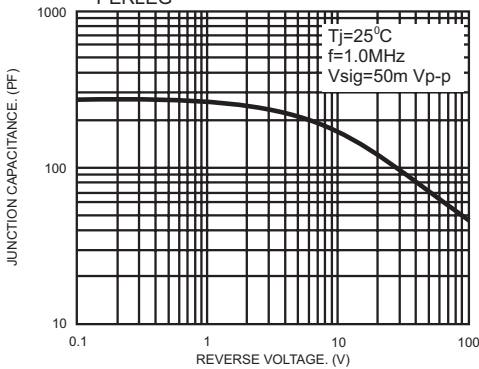
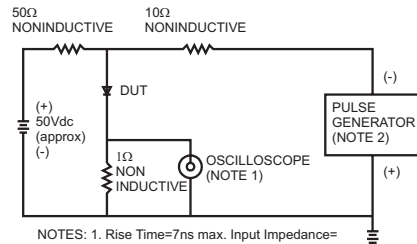


FIG.6- REVERSE RECOVERY TIME CHARACTERISTIC AND TEST CIRCUIT DIAGRAM



NOTES: 1. Rise Time=7ns max. Input Impedance=1 megohm 22pf
 2. Rise Time=10ns max. Source Impedance=50 ohms

